

SILENT BELL RINGER

- Answer the following question in your notebook:
 - Why do you think the Black Death was able to kill over $\frac{1}{3}$ of Europe's population in 1347?
 - What has five wheels but you most often think it has four?



SCHEDULE

OBJECTIVE: I CAN DESCRIBE THE EFFECTS OF THE BLACK DEATH

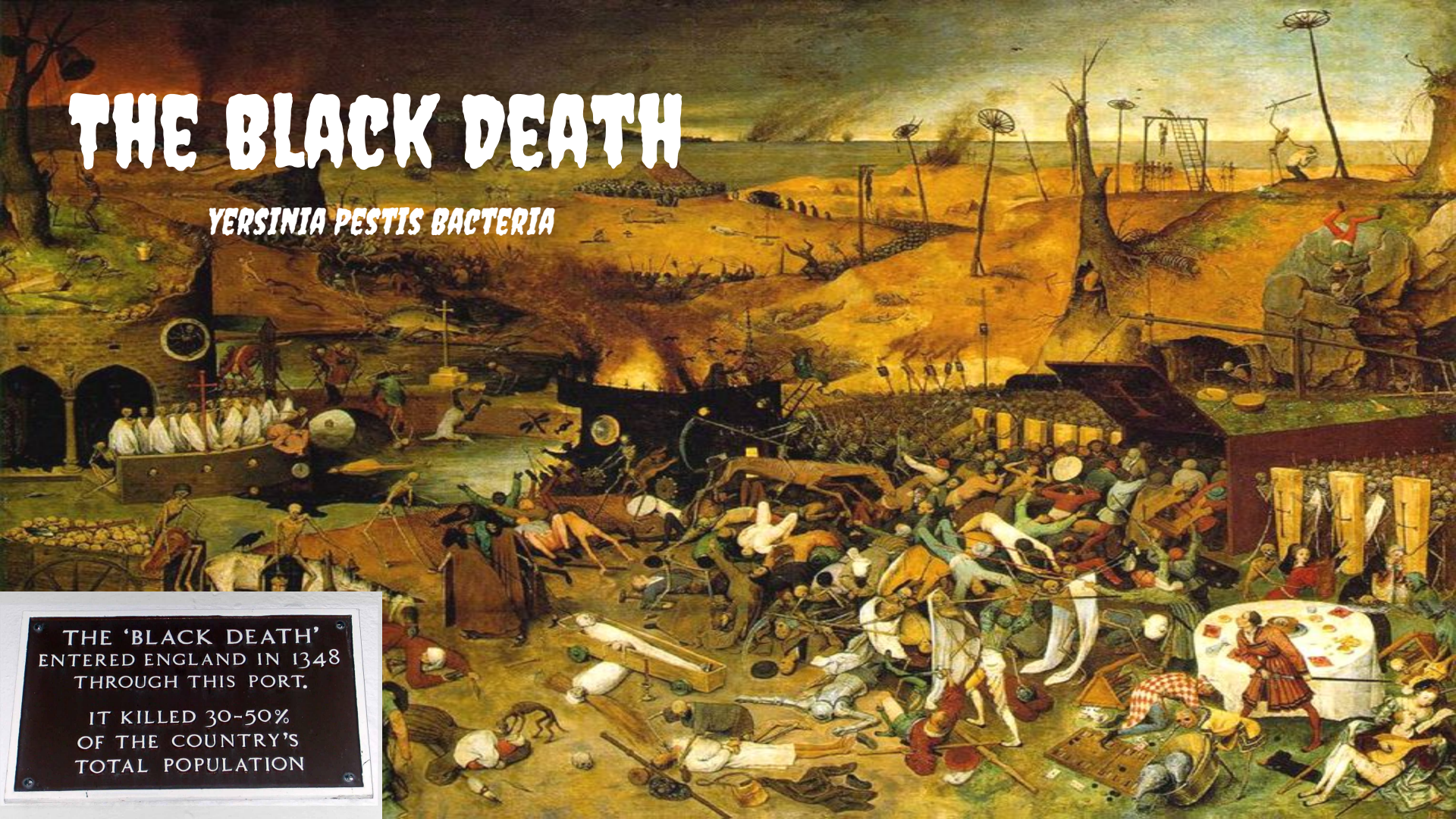
- **BLACK DEATH NOTES**
- **BLACK DEATH SIMULATION**

THE BLACK DEATH

YERSINIA PESTIS BACTERIA

THE 'BLACK DEATH'
ENTERED ENGLAND IN 1348
THROUGH THIS PORT.

IT KILLED 30-50%
OF THE COUNTRY'S
TOTAL POPULATION



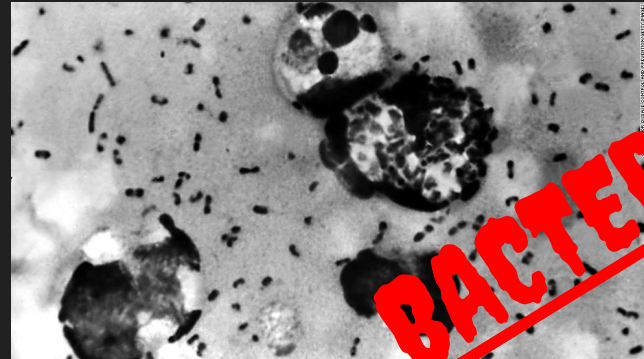
When you just wanted to bite one guy's leg
and you end up killing 1/3 of Europe





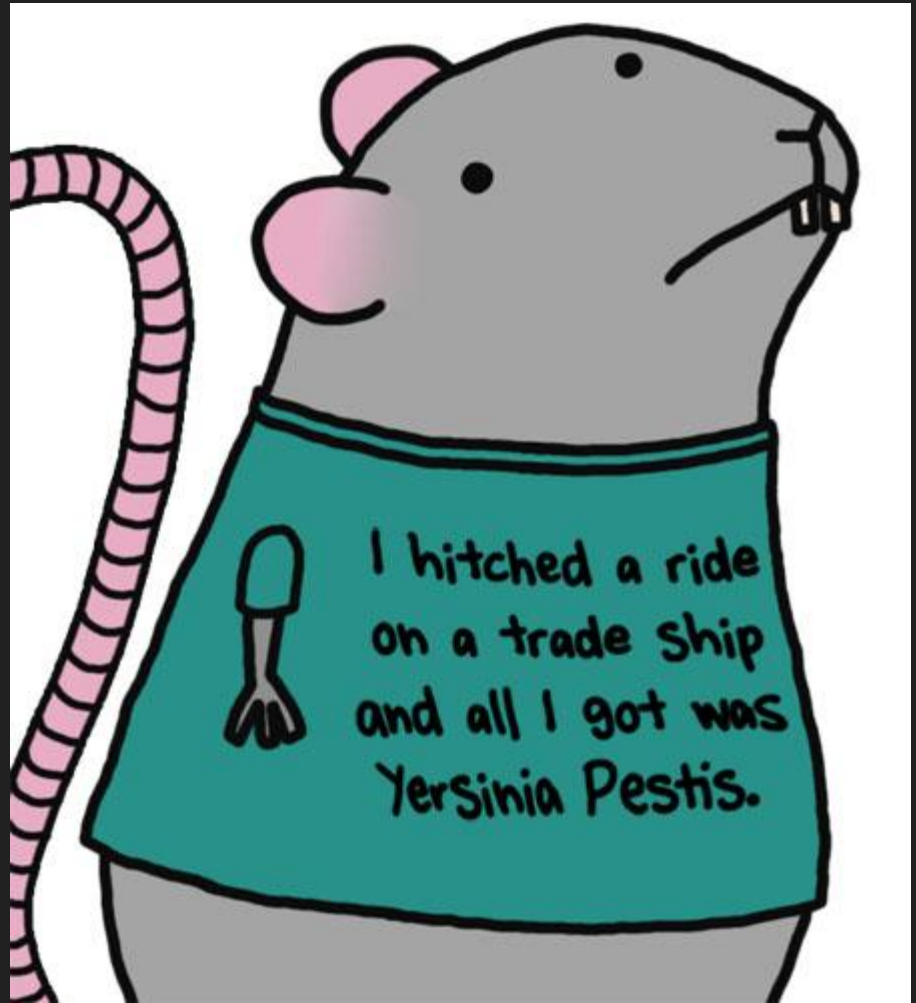
The Plague's Progress

WHO IS TO BLAME?

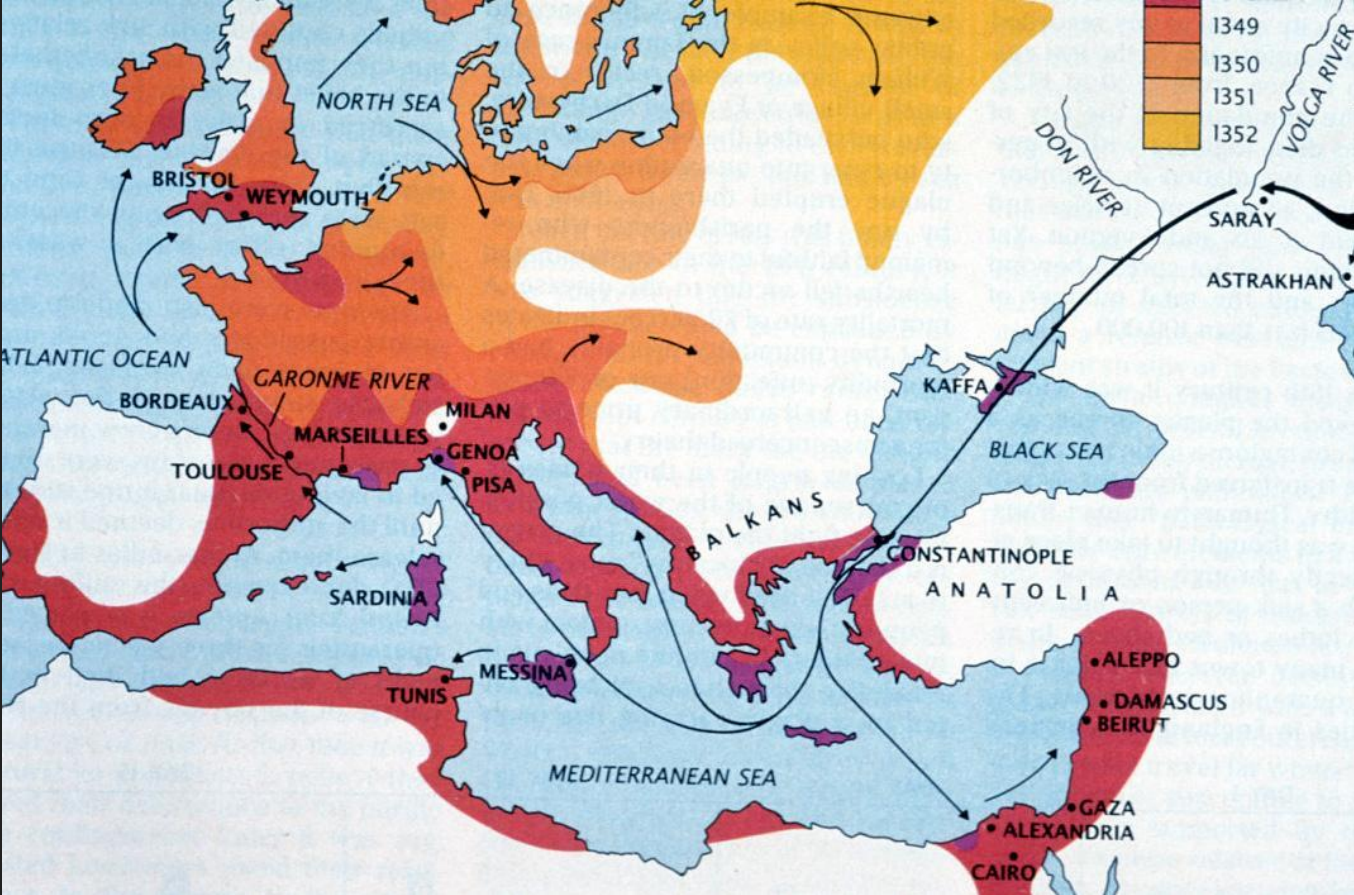


FAMINE OF 1315-1317

- Europeans were farming all the land they could cultivate
- Population crisis developed
- Those who were dealing with starvation and poverty were more susceptible to disease



1347: Plague Spreads





THE BLACK PLAGUE SIMULATION



WILL YOU SURVIVE.....?



DIRECTIONS

1. You will receive an envelope--**DO NOT OPEN**
 - a. If you open the envelope prematurely, you automatically die
2. We will be in the commons with the other World History classes
 - a. You are expected to listen to me, Mr. Garner, or Mr. Berkovich
 - b. When we go to the commons you should find a seat and be ready to listen
3. Please make sure you are listening to ALL directions and listening for signals
 - a. When you are interacting with each other, there is no need to yell, we are all aware you exist
 - b. If we can not handle the interaction, we will not be able to participate :)
4. Keep an open mind and have fun!

YOUR ENVELOPE—DO NOT OPEN

Back of Envelope

#1	#2	#3
----	----	----

*You will need a
writing utensil*



- How many of you died despite not being infected yourself?
- Why did people continue to trade?

List ANY four symptoms in your notes



Death

The Plague occurred in 3 Forms

PNEUMONIC PHASE

- Attacked the Lungs
- Caused fierce coughing & sneezing fits
- Chest pain, Bloody sputum

SEPTICEMIC PHASE

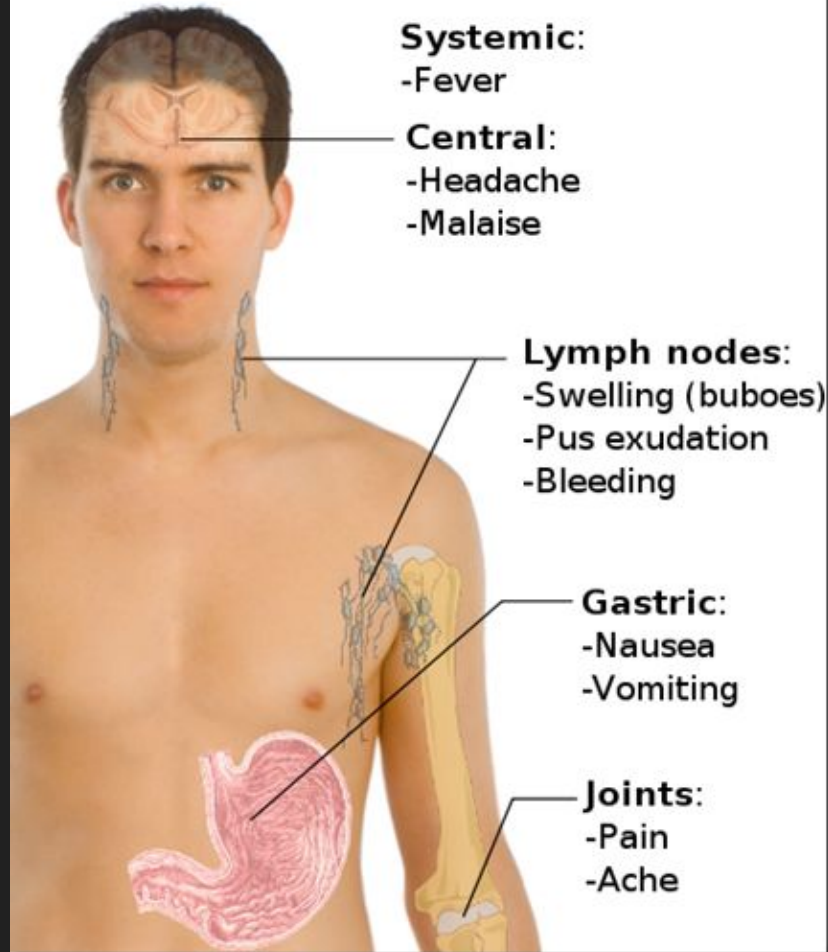
- Rarest and Deadliest
- Traveled thru bloodstream
- Black spots beneath skin
- Victims choked on own blood, Excruciating Pain!

BUBONIC PHASE

- Most Common
- Egg-sized swellings (buboes)
- Neck, armpits, groin (dark blisters)
- Headaches, Weakness, Nausea/Vomiting
- Severe Fever and Delirium



Symptoms of Bubonic plague





**INFECTION OF THE BLOOD,
ALMOST 100% DEATH RATE**

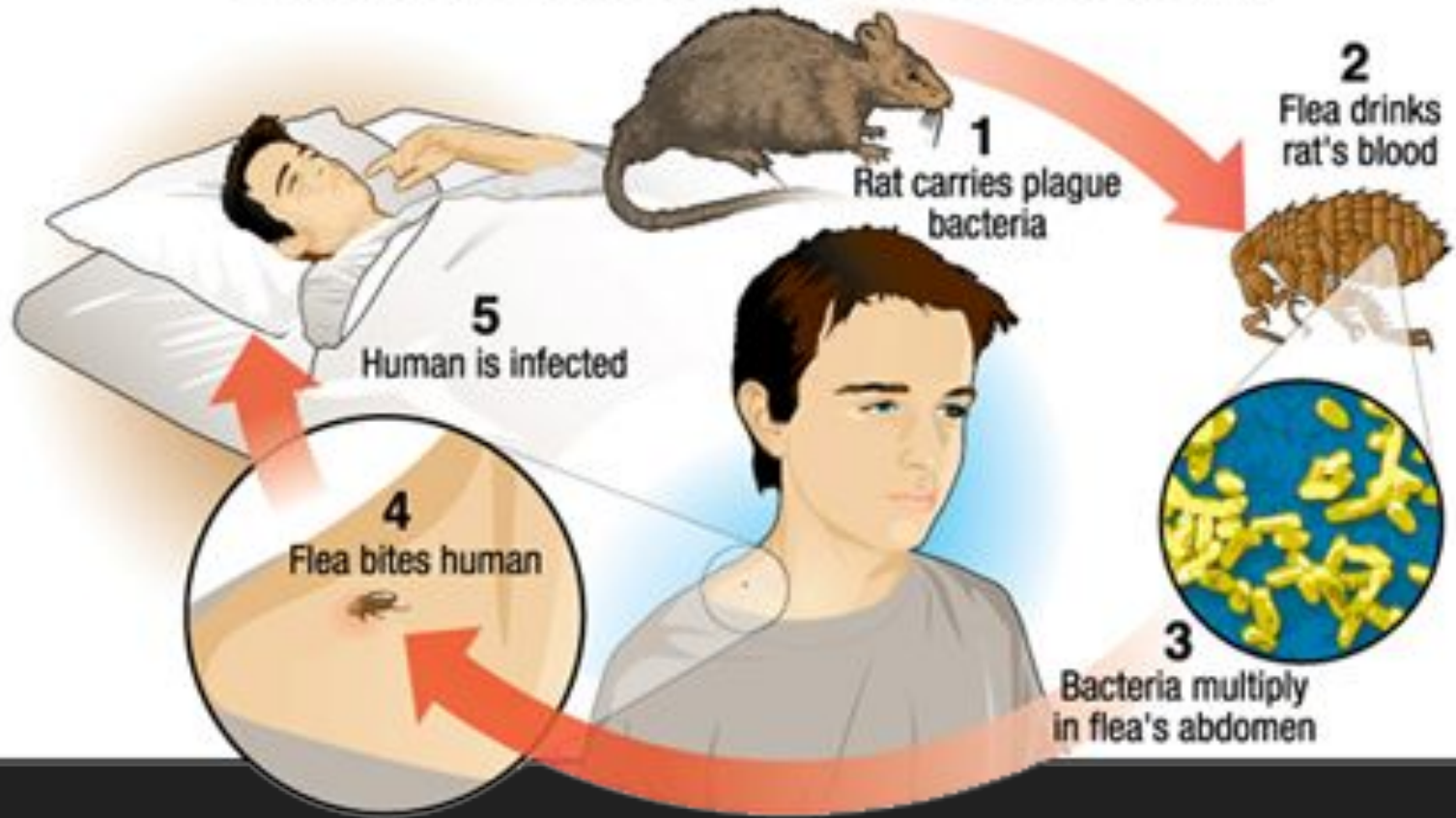


LANCING A BUBOE



List the steps of transmission

How the Bubonic Plague Was Transmitted





GoView

WHY DID IT SPREAD SO FAST?

·IGNORANCE SURROUNDED CAUSE AND CURE

·EUROPEANS WERE FRANTIC

BLAMES

·ALIGNMENT OF PLANETS

·INFECTED CLOTHING, HUMANS

·GOD'S WRATH AIMED AT SINNERS

·JEWS

CURES/REMEDIES

·POMANDERS

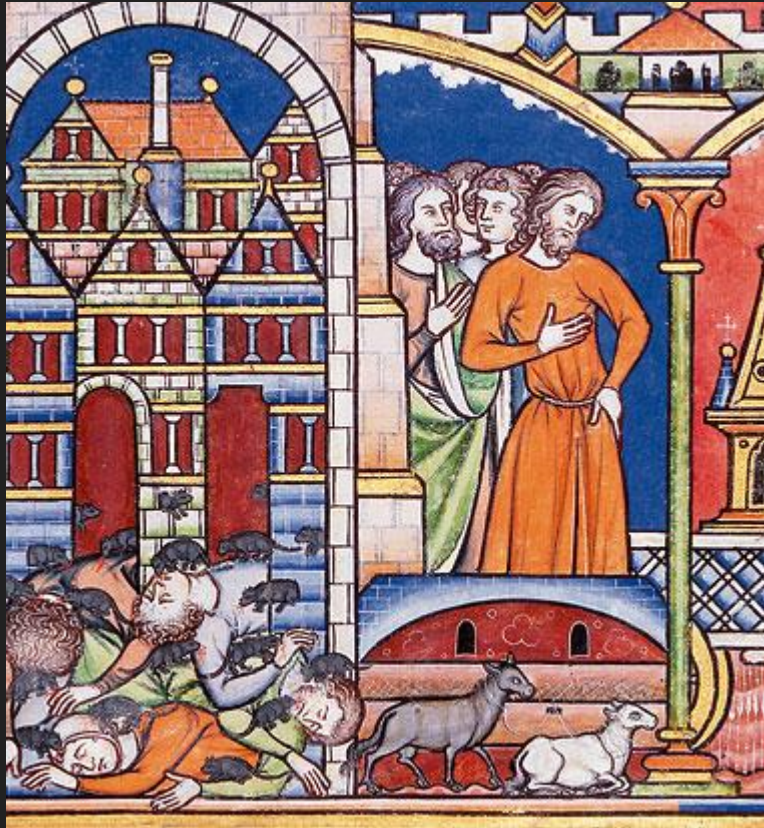
·MIXTURE OF MOLASSES &
CHOPPED SNAKE

·REPENTANCE

·FLAGELLANTS



MEDIEVAL ART AND THE PLAGUE



Lord, haue mercy

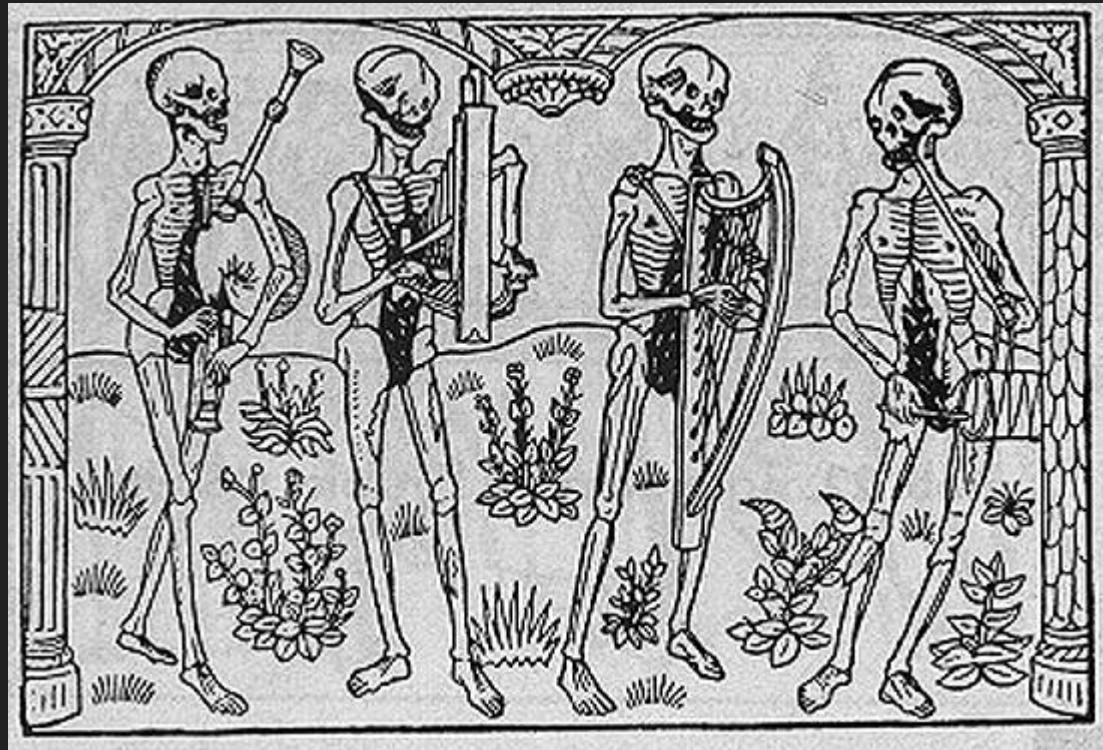
on London,



OBSESSION WITH DEATH



OBSESSION WITH DEATH



TRACING THE SPREAD OF THE BLACK DEATH

1. Originated in Mongolia's Gobi desert
2. Moved along the Silk Road to Black Sea
3. Bacteria carried by fleas, lived on black rats
4. Major trade/commercial cities were good hosts
5. Sicily in 1347, England 1348, culminating in Russia 1352
6. Was an Unstoppable Force



**THE VICTIMS ATE LUNCH WITH THEIR FRIENDS AND
DINNER WITH THEIR ANCESTORS.**

-BOCCACCIO IN THE DECAMERON

THE DANSE MACABRE

No matter one's social status in life, the Dance of Death unites all

Reminds people of the fragility of their lives and how vain the glories of earthly life were



Attempts to Stop the Plague: Leeching



Attempts to Stop the Plague: Doctor's Robe



Attempts to Stop the Plague: Flagellanti

- Self-inflicted “penance” for sins
- Some felt God was punishing them for sins with the plague



MORTALITY RATE:

35-70% DEAD

25,000,000



BUBONIC PLAGUE TODAY

- 2,100 CASES, 180 DEATHS (2003)
- SEVERAL CASES IN THE U.S. EACH YEAR
- CAN BE CURED BY ANTIBACTERIALS IF DETECTED EARLY ON

DID YOU KNOW...

During WWII, The Imperial Japanese Army Air Service bombed China on two known occasions with fleas infected with bubonic plague. These operations caused epidemic plague outbreaks.

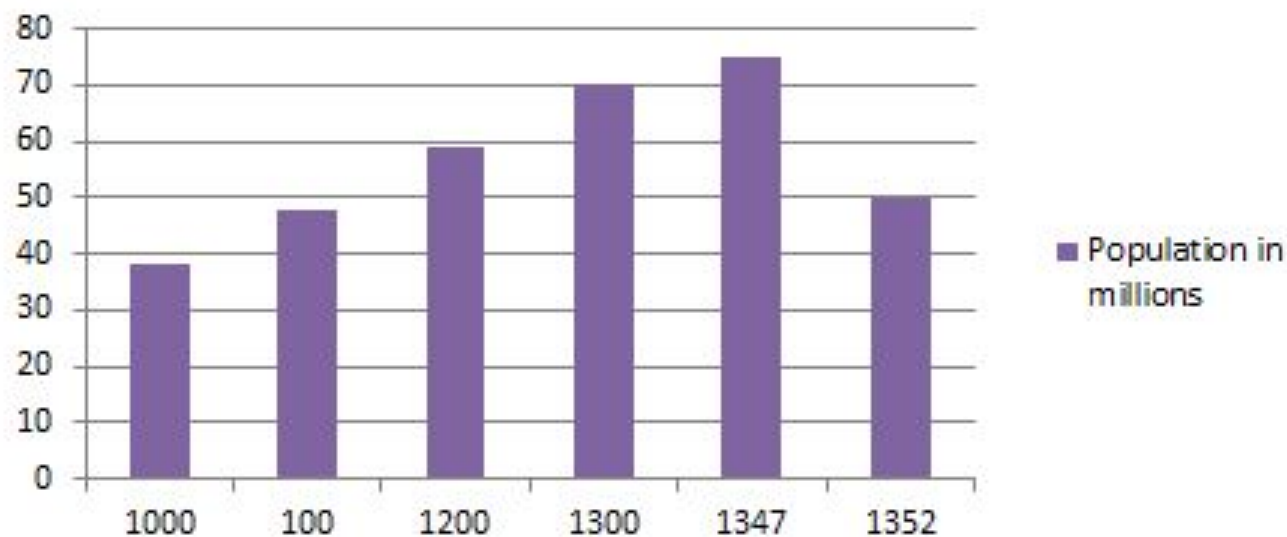


EFFECTS OF THE PLAGUE

- PEASANTS AND LABOURERS WERE THE HARDEST HIT PART OF SOCIETY BY THE BLACK DEATH
- THE KING PANICKED. HE WROTE A NEW LAW CALLED STATUTE OF LABOURERS IN 1351. THIS LAW SOUGHT TO PREVENT LABOURERS FROM OBTAINING HIGHER WAGES.
- DESPITE THE SHORTAGE IN THE WORKFORCE CAUSED BY THE PLAGUE, WORKERS WERE ORDERED TO TAKE WAGES AT THE LEVELS ACHIEVED PRE-PLAGUE.
- TRADE DECLINED AND WARS CAME TO A STOP
- EVENTUALLY THE COST OF LABOUR INCREASED
- LED TO THE DECLINE OF FEUDALISM

EFFECTS OF THE PLAGUE

The Black Death had the worst impact on the population in the history of the world



25 million people died in just under five years between 1347 and 1352. Estimated population of Europe from 1000 to 1352



DISASTER STRIKES

Estimated population of Europe from 1000 to 1352.

- ◊1000 38 million
- ◊1100 48 million
- ◊1200 59 million
- ◊1300 70 million
- ◊1347 75 million
- ◊1352 50 million

25 million people died in just under five years between 1347 and 1352



History of Plague

- Justinian's Plague (541-542) killed 1/4 pop. of Mediterranean
- 6th & 8th C. breakouts
- 16th, 17th, 18th C. Pandemics
Italian, London, Vienna, Marseilles, Russia
- 3rd Pandemic (Asian Plague) – 19th, 20th C.
~15 million dead (India, China, Russia)
- Biological Weapon (Japanese, WWII)
Looked at Medieval Styles of Catapulting Infected Bodies into Castles
Released Infected Fleas in China, Manchuria
Studied Live Subject, Dissecting



BRING OUT YOUR DEAD!



THE BLACK DEATH READING

- GO TO GOOGLE CLASSROOM AND OPEN **"THE BLACK DEATH"**
- READ THE ARTICLE AND ANSWER THE QUESTIONS AT THE END
- DO NOT COPY AND PASTE ANSWERS – PUT THEM INTO YOUR OWN WORDS!
- SUBMIT WHEN FINISHED



DISEASE



CCWH
203

DISEASE IN HUMAN HISTORY